



CITY IN THE  
COMMUNITY

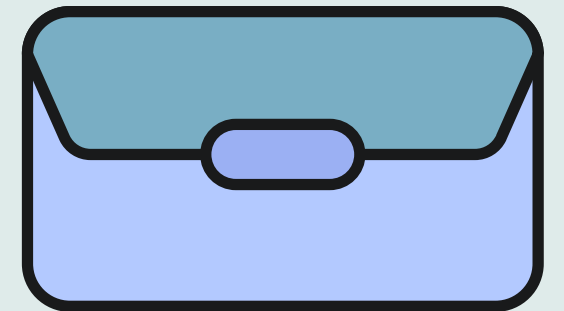
# SafeatCity

## TOWN SAFETY

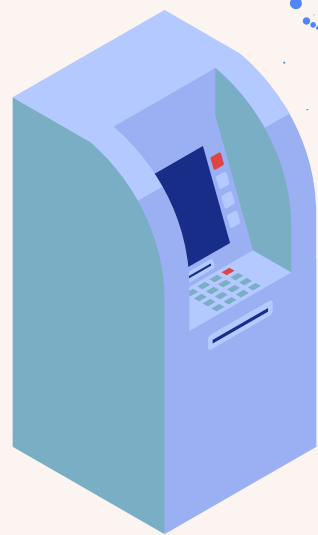
**Don't carry or show expensive belongings** like cameras, phones, jewellery or cash in public.



**In crowded areas and when on trams or buses,** keep your wallet/purse in your front pocket place your hand on top of it. If carrying a bag, keep it closed and hold it in front of you.



**Be cautious when using cash points** and make sure you don't carry a large amount of cash.



**Avoid walking at night and use public transport or a taxi.** If walking is absolutely necessary, stick to well lit public areas.



**If you need directions or help,** approach a police officer, a security guard or a shop assistant.



**Secure your bags.** When sitting, loop a strap round your arm, leg or chair. Use a paperclip or keyring to keep your bag secure.



**Face oncoming traffic when walking on the pavement.** This makes it harder for people to come up behind you on bikes, mopeds or in a car.



**STAY VIGILANT!!** - Be aware of your surroundings and be on alert if an argument breaks out. Watch for crowds and be aware when doors open it is a perfect time for someone to grab your bag and run.

**Stay Safe!**

**#SpeakupSpeakout**