



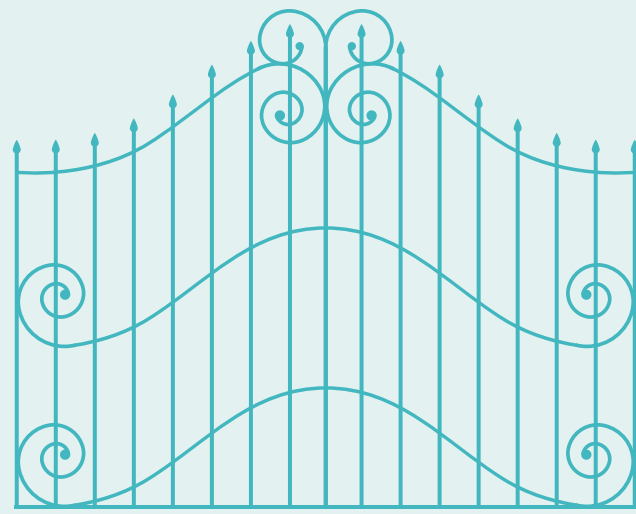
# PARK AWARENESS

Parks sessions have become a key part of our holiday provision. It is important that staff are vigilant and aware when out in parks. Here are some tips to help.



## Surroundings

Get to know the park! Familiarise yourself with the entrances, exits, play areas and hidden water, like ponds etc. Make sure the area being used for the activity is safe and clean for all.



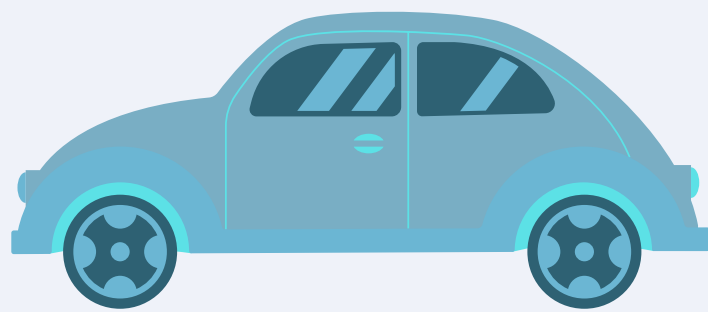
## Local area

Be aware of the local area. What is going on locally? Are there any risks need to be aware of? eg high level of anti social behaviour in the area.



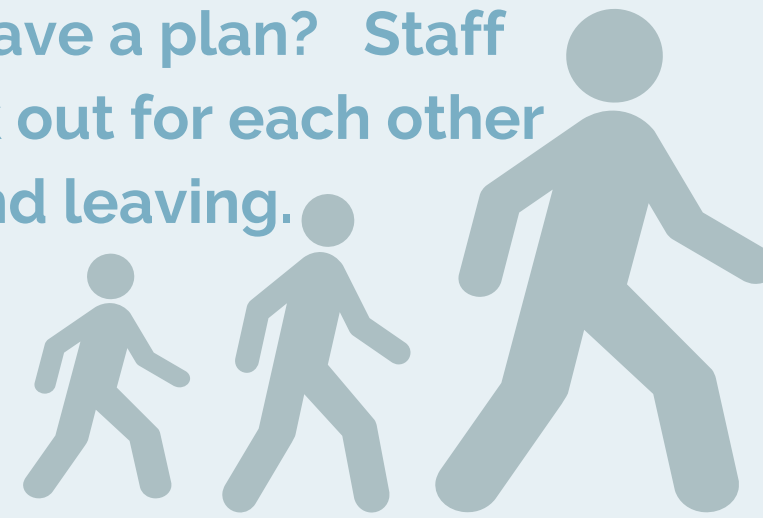
## Vehicles

Park your car in close vicinity to the park and with easy access.



## Dispersal

Ensure that participants disperse safely and know their way home. If they are travelling independently - Do they have a plan? Staff to leave together and look out for each other in getting back vehicles and leaving.



## Mobile Phone

Ensure your work phone is fully charged and accessible to use in an emergency with colleagues numbers safely stored.



## Environmental Factors

Check the weather forecast before the session. Plan ahead and be conscious of the good Manchester weather. Think of extreme conditions such as thunder, lightening, hail etc. Ensure staff and participant safety if extreme conditions occur. Cancel if not safe.



## Be Prepared

Be prepared for members of the public to approach you to ask questions, comments etc. Plan your sessions in advance and have activities prepared that are adaptable and appropriate.

